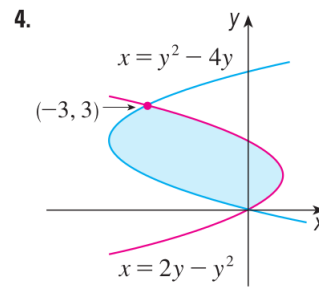
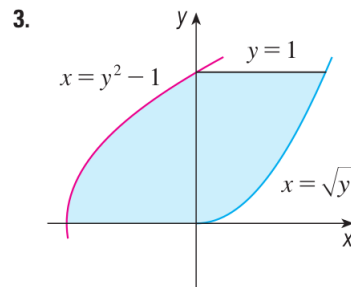
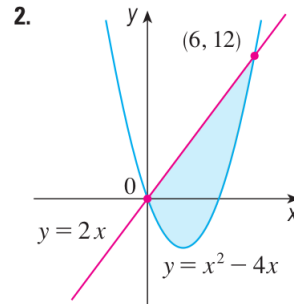
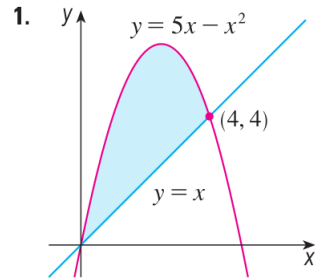




UNIVERSIDADE FEDERAL DA GRANDE DOURADOS  
Cálculo Diferencial e Integral — Lista 12  
Prof. Adriano Barbosa

(1) Calcule a área das regiões abaixo:



(2) Calcule a área das regiões delimitadas pelas curvas:

- (a)  $y = x + 1$ ,  $y = 9 - x^2$ ,  $x = -1$ ,  $x = 2$
- (b)  $y = (x - 2)^2$ ,  $y = x$
- (c)  $y = \sqrt{x + 3}$ ,  $y = \frac{x + 3}{2}$
- (d)  $x = 1 - y^2$ ,  $x = y^2 - 1$